

XpressSim V2 Quick Start

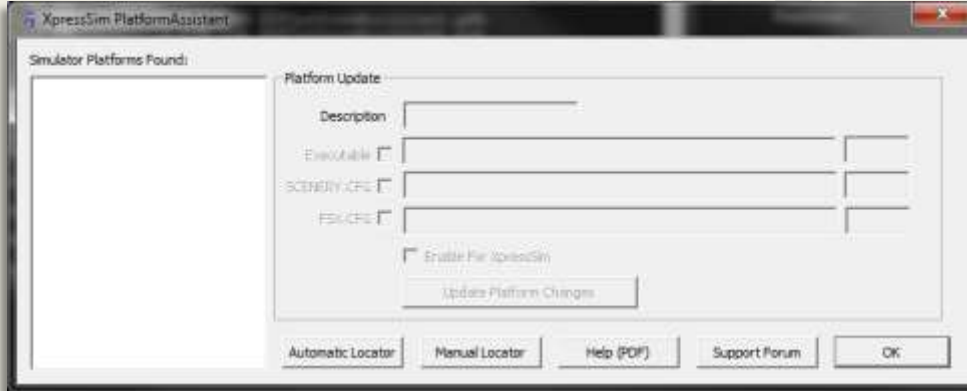
This Quick Start document will get you started in just a few minutes with XpressSim. It contains only the minimal number of steps to get you up and running with the “Middle Bass Island And Airports” demo.

1 SETTING UP SIMULATOR PLATFORM SUPPORT

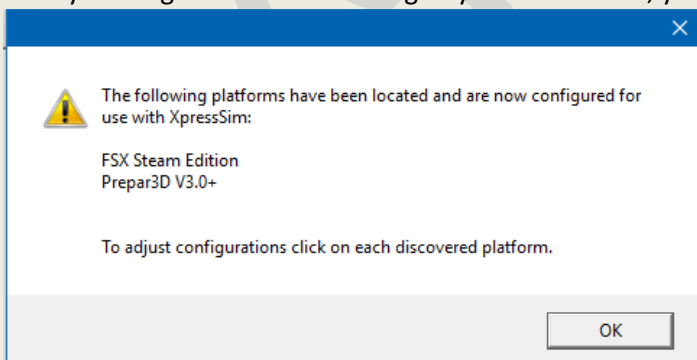
The platform setup portion of XpressSim only needs to be done 1 time after installing the interface. When the XpressSim Installer has completed, it will automatically call the XpressSim Platform Assistant. You will first be presented with the following message.



- Press OK. You will now see the Platform Assistant interface. As you can see, it is initially blank



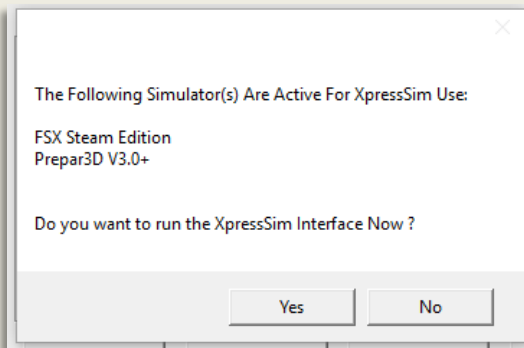
- Press the “Automatic Locator” button to have the application try and find all your installed Flight Simulator platforms by looking in the Windows Registry. If successful, you will see the following message.



In our case, the Platform Assistant found 2 simulators: FSX Steam Edition and Prepare3D V3. Initially, both of these simulators have automatically been configured for use with XpressSim.

- Press OK to continue and exit the previous window.
- Then, press the “OK” button to exit the XpressSim Platform Assistant.

Here is our confirmation message.



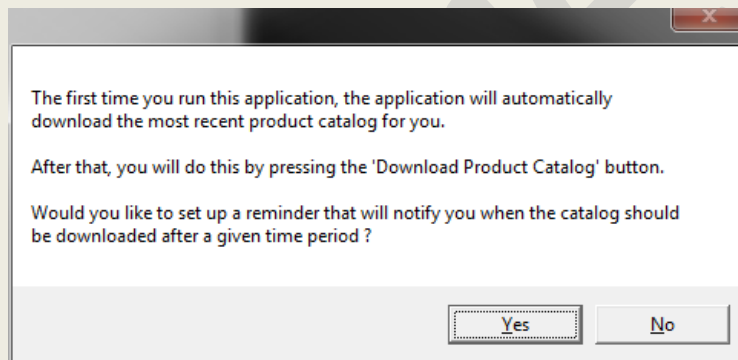
- Press “Yes” to automatically start the XpressSim Interface and exit the XpressSim Platform Assistant.

The platform assistant allows you to fully edit and even manually add platforms. For more information on using the advanced Platform Assistant features, you can press the “Help (PDF)” button available on the main Platform Assistant window.

2 DOWNLOADING AND INSTALLING A XPRESSSIM DEMO

After exiting the platform assistant, the main XpressSim interface will attempt to load for you.

Since you are running XpressSim for the very first time, the following message will be displayed.

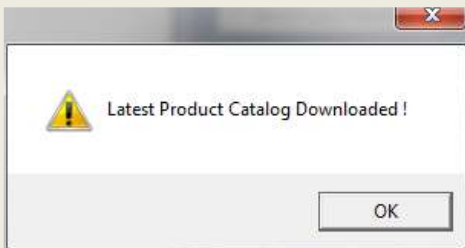


- Press “Yes” to setup a reminder notice for downloading an updated XpressSim product list upon program startup.
- Press “No” to continue on without scheduling download notices.

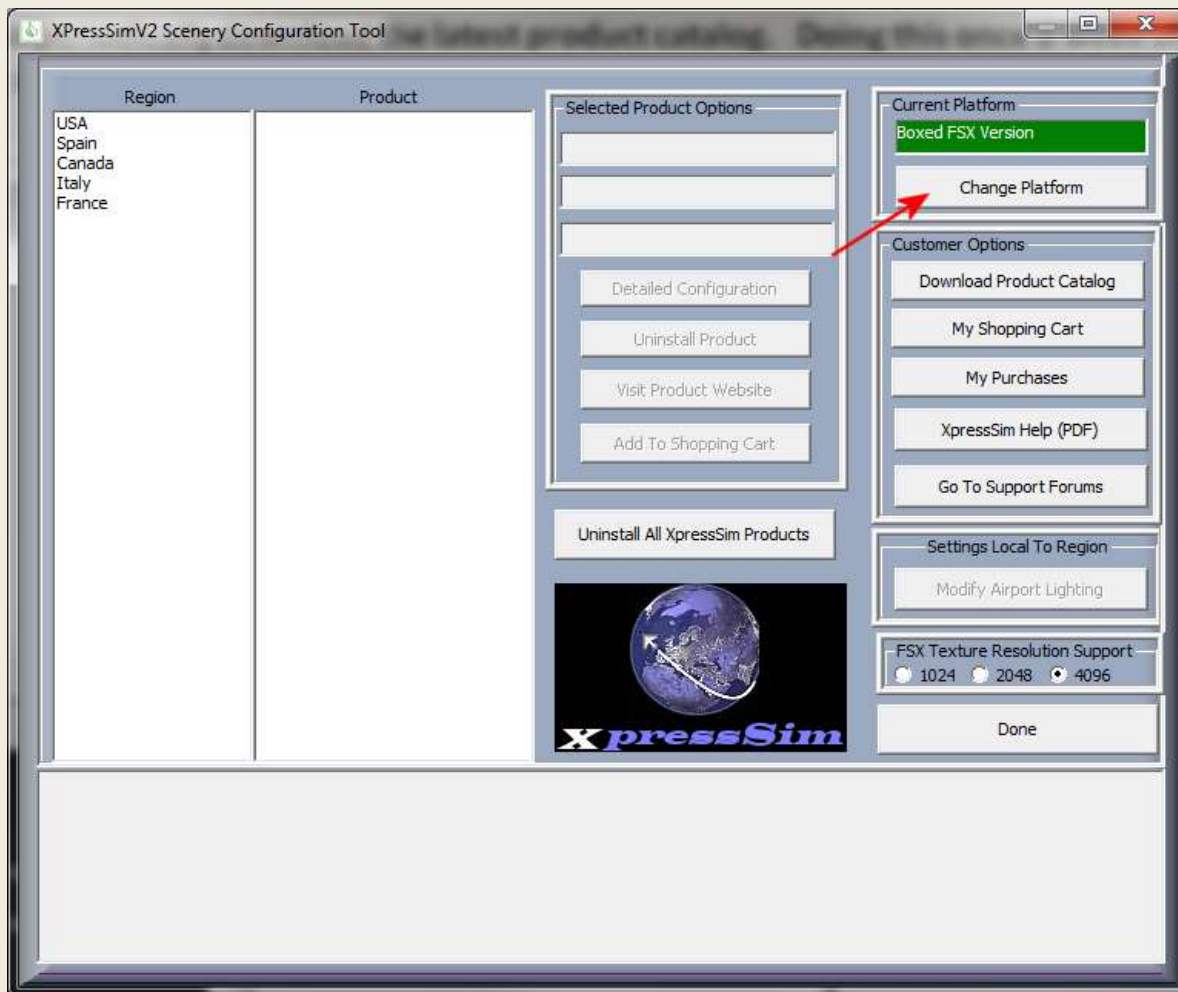


- If you pressed "Yes", enter the number of days between catalog download notifications.
- Press OK from either window to continue.

The initial downloading of the XpressSim product catalog will then take place automatically.



- Press "OK" to bring up the XpressSim Interface shown in the next image.

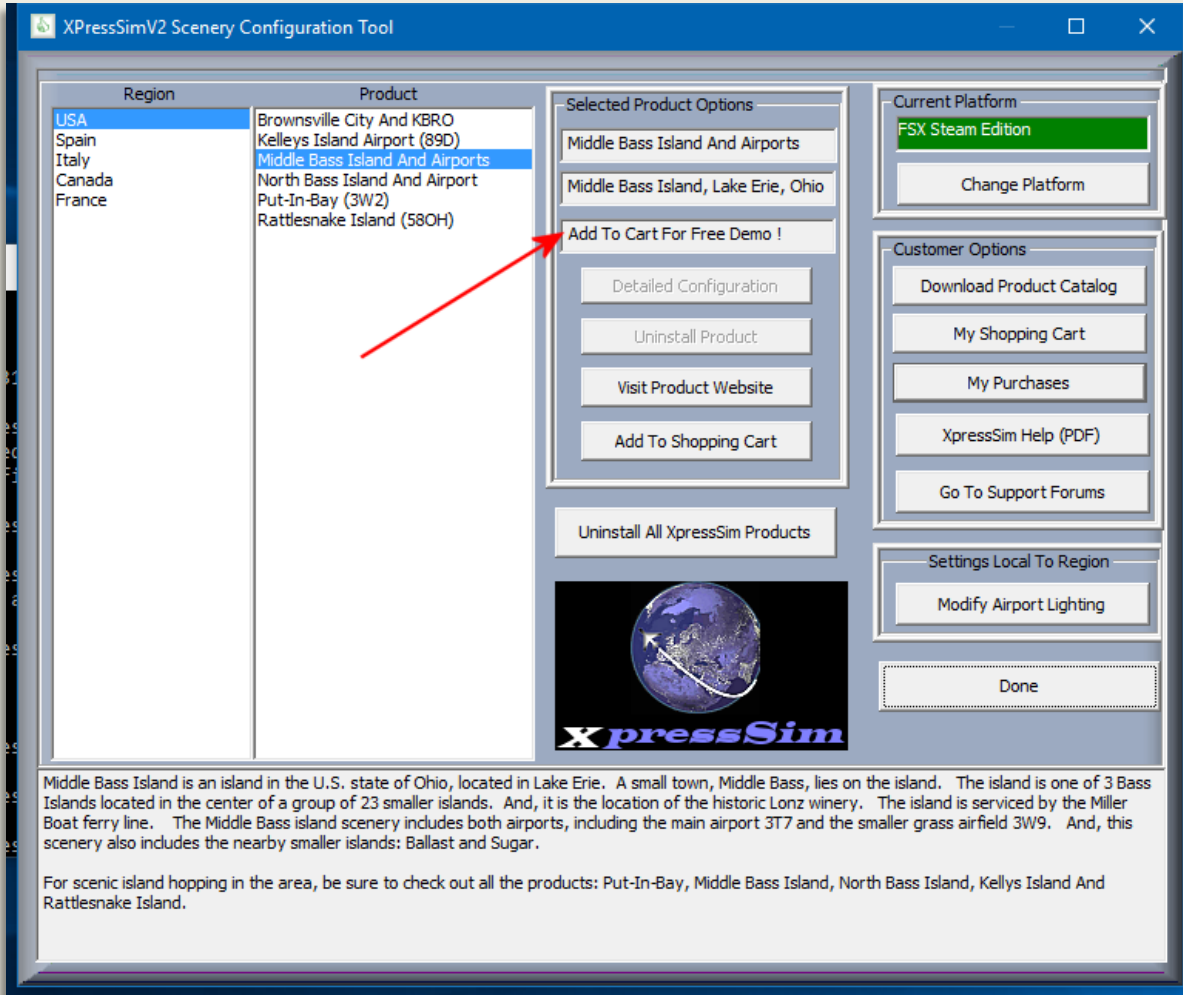


When the download is completed, you will see all the available XpressSim product regions in the “Region” box on the left side of the display. Keep in mind that Scenery Solutions and Flight 1 will be frequently adding new products over time. **So, remember to periodically download the latest product catalog (“Download Product Catalog” button). Doing this once a week should keep you updated. This will not happen for you automatically when you run the XpressSim interface !**

In the upper right hand corner, the current platform will be displayed in the green box (FSX Steam Edition in this case). All XpressSim installs and configurations will affect only the platform displayed in this box.

If you have multiple simulator platforms that were defined in the XpressSim Platform Assistant, you can switch platforms in XpressSim by pressing the “Change Platform” button.

- Select “USA” in the “Region” box as shown in the next image.
- Then, select the product “Middle Bass Island And Airports” in the “Products” box.



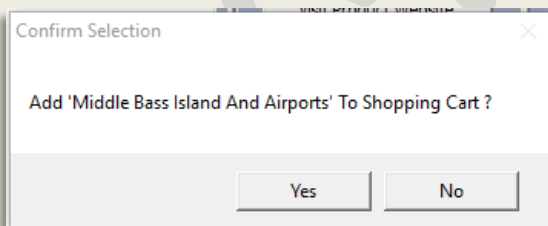
Middle Bass Island is an island in the U.S. state of Ohio, located in Lake Erie. A small town, Middle Bass, lies on the island. The island is one of 3 Bass Islands located in the center of a group of 23 smaller islands. And, it is the location of the historic Lonz winery. The island is serviced by the Miller Boat ferry line. The Middle Bass island scenery includes both airports, including the main airport 3T7 and the smaller grass airfield 3W9. And, this scenery also includes the nearby smaller islands: Ballast and Sugar.

For scenic island hopping in the area, be sure to check out all the products: Put-In-Bay, Middle Bass Island, North Bass Island, Kellys Island And Rattlesnake Island.

You will see the display change to provide additional information about the selected product. You will also see a message “Add To Cart For Free Demo” appear in the box pointed to by the red arrow in the previous image. This box will normally show you the current product status and price.

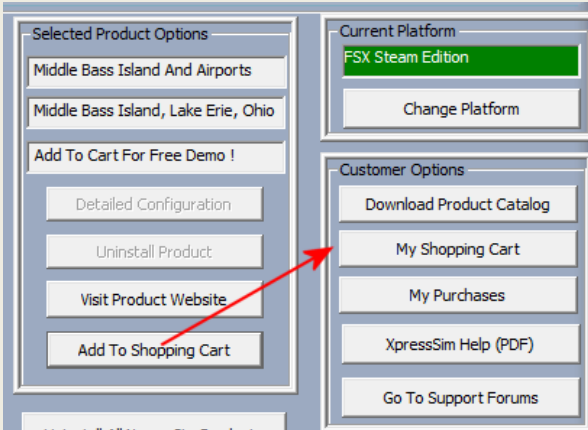
- Press the “Add To Shopping Cart” button to add the “Middle Bass Island And Airports” demo product to the shopping cart.

You will not need a Flight 1 account to download and install demo products.

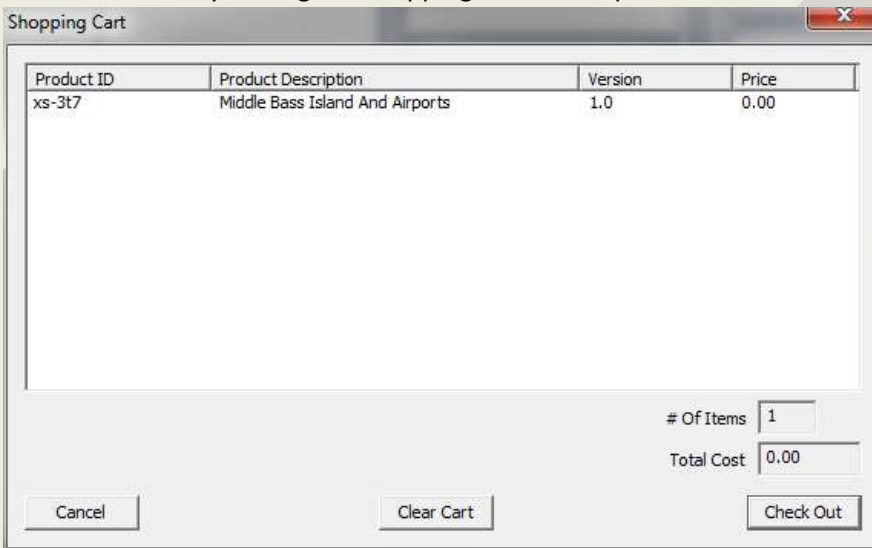


- Press ‘Yes’ to confirm and add the product to the cart.

- From the main interface, click the “My Shopping Cart” button.



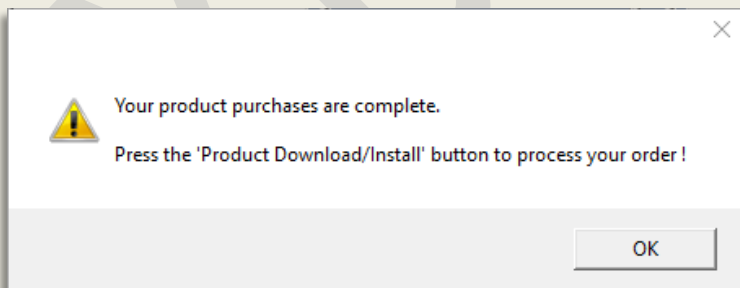
You will now see your Flight 1 shopping cart with 1 product listed.



As you can see the cost is 0.00.

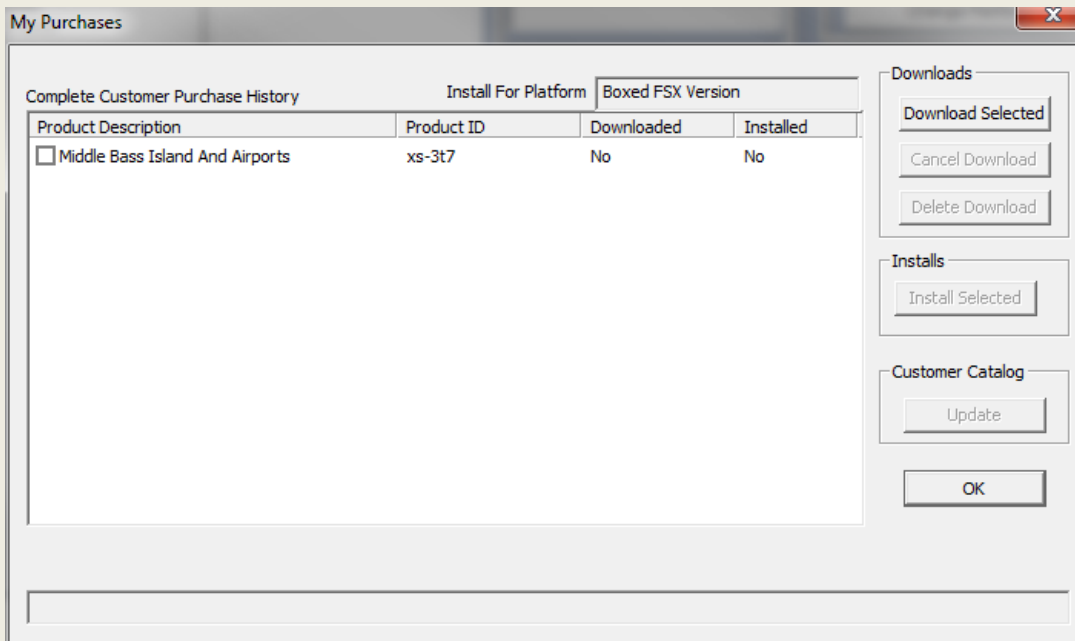
- Press the “Check Out” button.

Since we are downloading a free demo, you will go straight to the following message:



- Press OK to continue

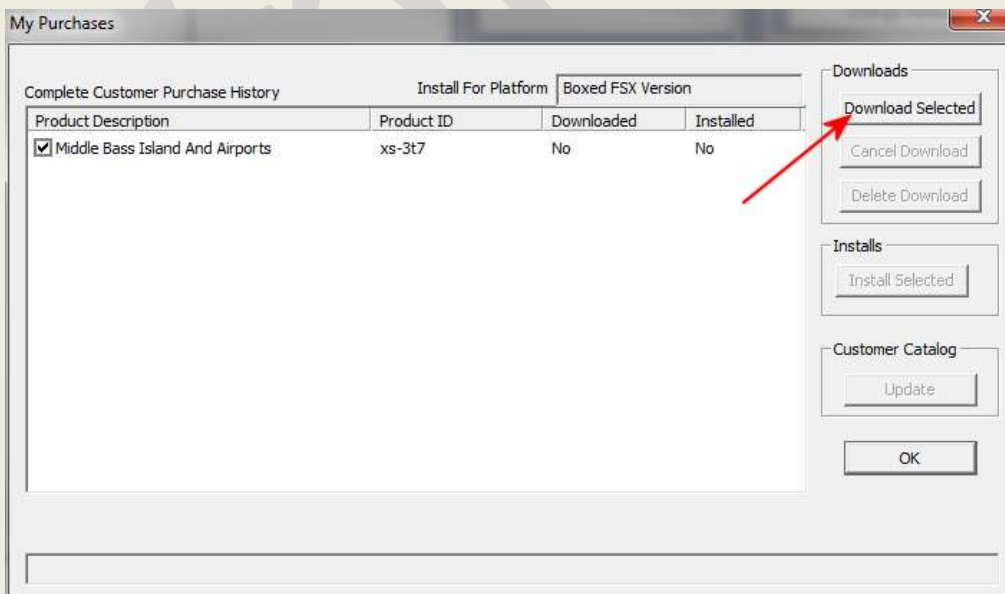
When the shopping cart exits, you will automatically be taken to the “My Purchases” window.



The “My Purchases” window can be accessed at any time (by pressing the “My Purchases” button from the main interface window). This is the location where you will download and install all your purchased (or demo) products. Downloads will be shared among all simulator platforms supported by XpressSim. But, when you install a product, it only installs to the current selected platform that is displayed in the upper right corner of the window (Boxed FSX Version in this example).

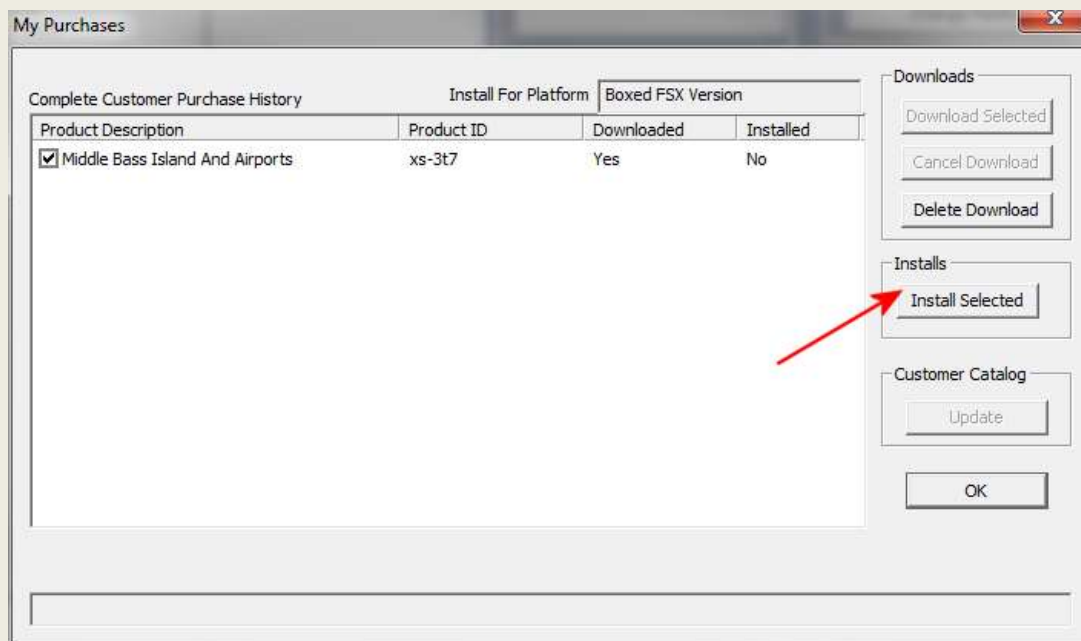
In this window, you will currently see the free product listed. As you add products to your customer catalog in the future, they will all appear in this window. The “My Purchases” window shows you the product description, product ID, and the current download and installation status. As you can see, the product has not been downloaded or installed.

- Click the “Middle Bass Island And Airports” checkbox.
- Press the “Download Selected” button to download the demo.

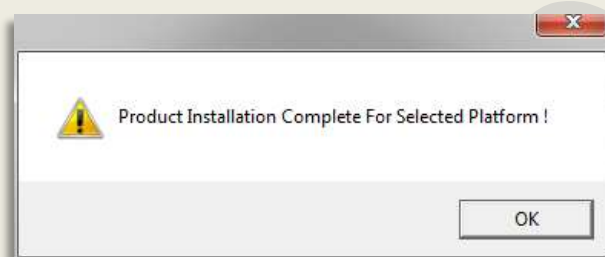


During the download, you will see the progress displayed as a percentage. When it is complete, the “Downloaded” column will display “Yes”.

- Select the “Middle Bass Island And Airports” check box again.
- Press the “Install Selected” button to install the product for the current simulator platform.



When all selected products have been installed, you will see the following message:



At this point the product is installed and ready to go.

- Press OK to close this window

You only need to start your simulator and place your aircraft at airport 3T7 to see the Middle Bass Island scenery.

3 WHERE TO GO FROM HERE

This Quick Start Guide was designed to get you up and running quickly. Much more documentation is available for you regarding using the XpressSim tools.

- XpressSim Interface User’s Guide PDF
- Xpress Sim Platform Assistant PDF

In addition, links to our support forum are available within the XpressSim interface. We hope you enjoy this XpressSim product demo. XpressSim is a new and unique way of creating and distributing quality scenery products to the flight simulator public. Our goal is to eventually have hundreds, if not thousands, of cost-effective, high-quality and great performing titles for your enjoyment over the coming years.

